

WHAT IS SPINA BIFIDA?

Spina Bifida damages babies very early in pregnancy, when the spine and brain are being formed. It is a fault in the development of the spinal column, when one or more vertebrae fail to close properly, leaving a gap.

This means the vitally important spinal cord and nerves are likely to be damaged, often resulting in paralysis below the level of the fault. Walking may be difficult or impossible.

The severity depends very much on where the spina bifida is and the amount of nerve damage involved. There may also be the problem of incontinence. Later in life, the spine may curve or twist.

WHAT IS HYDROCEPHALUS?

Hydrocephalus is caused by excess pressure of fluid in the brain, resulting in swollen ventricles. In babies, the most obvious sign is accelerated growth of the head.

The excess pressure has to be relieved quickly in order to minimise damage to the brain. This is most commonly done by an operation to insert a 'shunt' - a one-way valve which removes the excess fluid so it can be absorbed by the blood-stream.

Many people with spina bifida also have hydrocephalus, but it can occur by itself - after meningitis or a head injury perhaps, or in babies born prematurely.



Designed and produced by Nicholson Advertising, St Michael's House, Anderson Centre, Olding Road, Bury St Edmunds IP33 3TA. Tel: 01284 725111



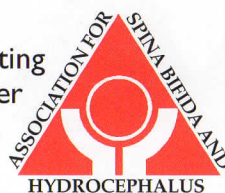
As they grow up, Victoria and thousands of children like her will need all the help they can get to make the most out of their lives.

This is where ASBAH steps in. We want to make sure that Victoria gets good education, the therapy she needs to make her muscles work, and advice on how to keep mobile.

As she gets older, we want to be there to help her make a home of her own and enjoy being an adult. We shall probably need to be on call when she's thinking about a job.

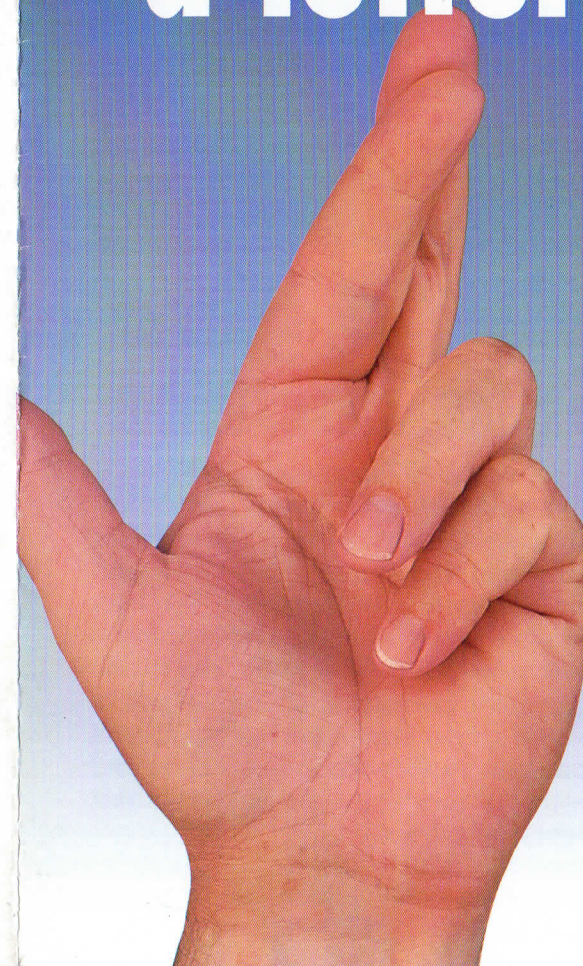
It won't happen just by chance. We need your support as we plan ahead - for Victoria's sake.

We can't hang around waiting to hit the lottery jackpot. Her life is too precious for that.



Association for Spina Bifida and Hydrocephalus (ASBAH) 42 Park Road, Peterborough PE1 2UQ
Tel 01733-555988 Fax 01733-555985

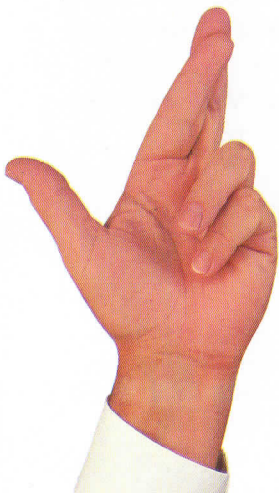
With Spina Bifida every day's a lottery





Help to give her a chance

Life can be a lottery for people like Victoria who have spina bifida and hydrocephalus. ASBAH is the national charity which provides unique and vital services to EVERYONE who has spina bifida and hydrocephalus. We help to give them the opportunity to develop their skills and talent and fulfil their potential. With specialist care and attention, we enable people with these disabilities to overcome difficulties, gain confidence in themselves and take control of their lives - so reducing their dependency on others.



PLEASE HELP US TODAY

ASBAH depends on the support of people like you to help 15,000 people with spina bifida and hydrocephalus. We need your help, and would welcome it today.

MAKE YOUR DONATION

You could make a straightforward donation which will help immensely. Send whatever you can afford to the address below. We shall acknowledge it immediately.

TAX-EFFICIENT

If you are a taxpayer, you may prefer to make your giving tax-efficient, and covenant income to us over a period of four years or more.

You can use the form opposite to pledge a covenant, and send it to us at the address below. We will be pleased to tell you more about covenants or another scheme covering single gifts which would boost our income, and not cost you a penny extra.



Association for Spina Bifida and Hydrocephalus (ASBAH)
42 Park Road, Peterborough
PE1 2UQ
Tel 01733-555988
Fax 01733-555985

Registered Charity Number 249338

A copy of our Annual Review and Accounts will be sent on request

DEED OF COVENANT

To: Association for Spina Bifida and Hydrocephalus

Notes

I promise to pay you for _____ years, or until I die if _____
earlier, such a sum as after deduction of income tax at basic
rate amounts to _____
each (week) (month) (quarter) (year) _____
from _____
Signed and delivered _____

Date _____

Full Name _____

Address _____

Witnessed by:

Signed _____

Full Name _____

Address _____

Notes on the Deed of Covenant

1. Enter the period of the covenant, which must be longer than three years.
2. Enter the amount you will be paying to ASBAH.
3. Delete as appropriate to show how often you will make payment.
4. Enter a date which must not be earlier than the date you sign the deed (see note 5).
5. You must sign the form and enter the date you actually sign it in the presence of the witness who must also sign where shown.

BANKER'S ORDER

Name _____

Address _____

Please pay _____ (£ _____)

Starting on _____ 19 _____ and a like sum

- (a) on the same date in each of the following three years, making four payments in all.
- (b) on each subsequent month thereafter for 3 years 11 months, making 48 payments in all.

My signature _____

To the manager _____ Bank Sort Code _____

A/C No. _____

Please pay to The Co-operative Bank PLC (08-90-40),
33 Westgate, Peterborough PE1 1PU for the credit of ASBAH
(A/C No 70784071) quoting Ref _____